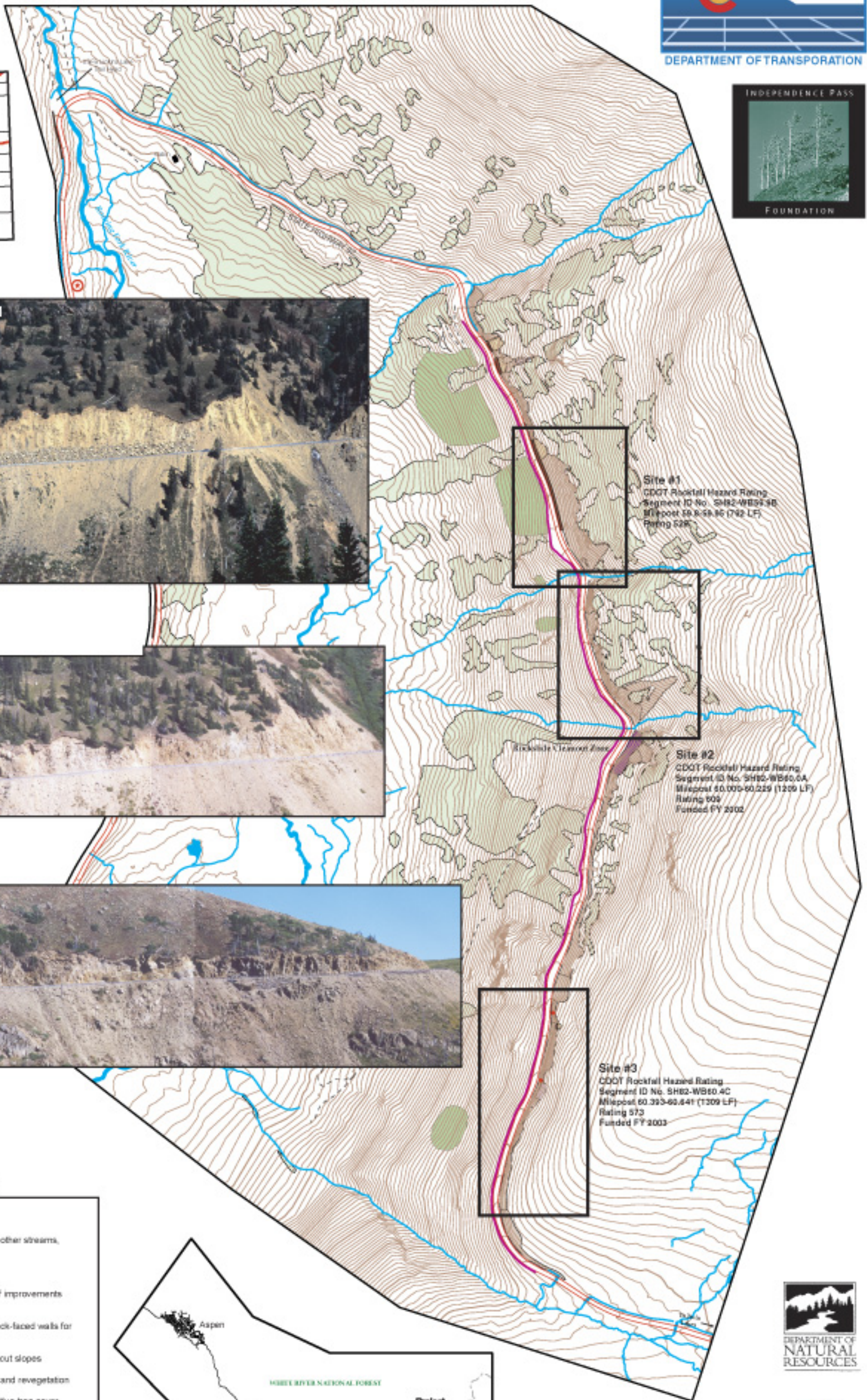


Independence Pass Rockfall Project

State Highway 82, Pitkin County, Colorado



COLORADO INDEX



Site #1
CDOT Rockfall Hazard Rating
Segment ID No. SH82-WB59.9B
Milepost 59.8-59.95 (792 LF)
Rating 528

Site #2
CDOT Rockfall Hazard Rating
Segment ID No. SH82-WB60.0A
Milepost 60.005-60.229 (1209 LF)
Rating 605
Funded FY 2002

Site #3
CDOT Rockfall Hazard Rating
Segment ID No. SH82-WB60.4C
Milepost 60.393-60.641 (1209 LF)
Rating 573
Funded FY 2003

EXPLANATION

- Highway 82
- Site Hydrology (Roaring Fork River, other streams, wetland ponds, and culverts)
- Trails
- Roadside safety and drainage/runoff improvements (guardrail and highway curbing)
- IPF, CDOT, and USFS sponsored rock-faced walls for slope reconstruction
- Extent of currently existing highway out slopes
- IPF sponsored slope reconstruction and revegetation
- Approximate locations of existing native tree cover
- IPF sponsored revegetation areas. Sites include revegetation erosion control blanket and turf reinforcement matting installations, terrace construction, and tree seedlings and shrub plantings
- Location of IPF and CDOT sponsored wire mesh and gabion mattress installations
- Rock excavation zone of highway cut slope to mitigate 1999 rockslide
- Independence Pass Foundation Highway 82 Roadside Information Signs
- Highway out slope rock anchor stabilization location



INDEPENDENCE PASS CORRIDOR INDEX



CONTOUR INTERVAL 10 FEET



Compiled by Jonathan L. White and Jason C. Wilson

Data Sources

- Contour Lines: IPF
- Hydrology: IPF
- Roads: IPF
- Vegetation: IPF
- Study Area Boundary: CGS
- Geology/Topography: CGS
- Project Site Locations: CGS
- Rockfall Rated Segments: CDOT